

LIBERTY CHAIR

Profile Systems | Spec Sheet



v1.1

PROFILE
SYSTEMS



FEATURES

- SELF-ADJUSTING RECLINE
- PIVOTING BACKREST
- FORM-SENSING MESH BACK
- CONTOURED SEAT CUSHION
- HEIGHT ADJUSTABLE
- FIVE WAY BASE IN ALUMINIUM

MATERIALS

- NYLON BACK FRAME
- NYLON CONSTRUCTION AND POLYURETHANE ARMRESTS
- HIGH DENSITY SPONGE SEAT
- FIVE WAY BASE IN ALUMINIUM
- 48% RECYCLED MATERIALS

LEAD TIME

8-10 WEEKS

DIMENSIONS

W: 675mm
H: 730mm
D: 992mm

LIBERTY

Specifications



The Liberty Task chair is an intelligent mesh task chair engineered to provide automatic lumbar support for every user, as well offering simplicity and complete ease of use. Liberty was designed to offer a unique, minimal aesthetic and to provide custom comfort for every person who sits in it. Like Humanscale's Different Smart and Different World chairs, Liberty uses Humanscale's revolutionary Form-Sensing Mesh Technology and mechanism-free recline for perfect support and unprecedented comfort.



LIBERTY

Finishes

UPHOLSTERY

The standard upholstery options for this product are seen below, however, alternative upholstery may be available on request.

BASE

Black or Aluminium castors



FINISH OPTIONS:



FOREST



IVY



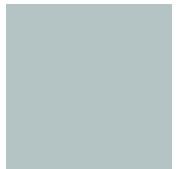
PINE



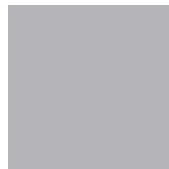
LOGO GREY



OLIVE



BLUE ASH

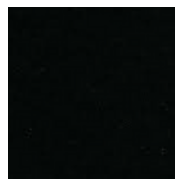


LIGHT GREY

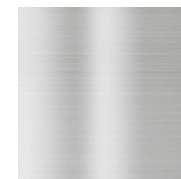


MEDIUM GREY

FRAME FINISH OPTIONS:



BLACK



ALUMINIUM



GENERAL INFO & TERMS

PROFILE SYSTEMS GUARANTEE

Profile Systems provides warranty policies on products that specify a warranty period. The warranty period commences on the date of delivery.

PROFILE SYSTEMS CERTIFICATION

Profile Systems continually strive to reduce the environmental impact of all products we offer. For many years, Profile Systems has been working with dedicated suppliers and manufacturers who conform to the ISO14001 standard. This standard is used worldwide to assess business environmental management systems in order to ensure wood products originate from responsibly managed forests.

In line with this, we have created an internal product stewardship program, which directly aligns with our manufacturing partners who are ISO 14001 certified and accredited with GreenGuard, BIFMA, GECA, AFRDI, Greentick, FSC, VOC certifications or equivalent. Additionally, we endeavour to recycle all product packaging and strive to recycle and re-home furniture utilising our End of Life Policy.

PROFILE SYSTEMS QUALITY

Thanks to our established quality requirements and control management of production processes, Profile Systems can guarantee excellent quality, long life and durability.

PROFILE SYSTEMS FABRICS

The shades of fabric swatches found in this document cannot be reproduced exactly to what is seen on digital or printed paper. Profile Systems is entitled to make modifications at any time or without any prior notice.

PROFILE SYSTEMS LEAD TIMES

Is measured from the receipt of approved shop drawings, an official purchase order, and payment of the deposit invoice. Lead times exclude weekends, public holidays, and RDOs. Lead time is subject to specified fabrics/laminate/timber finishes being in stock and readily available at receipt of order confirmation. Profile Systems reserves the right to extend our lead-time if materials are not readily available.

PROFILE SYSTEMS MAINTENANCE

If you have any queries in regards to our general maintenance practices, or you have a product matter you need to discuss, please send us an email with images to sales@profilesystems.com.au

CONTACT

For further enquiries / to order:

sales@profilesystems.com.au

1800 788 755

www.profilesystems.com.au



LOCATIONS

HEAD OFFICE

Unit 8, 25 Frenchs Forest Rd. E
Frenchs Forest, NSW 2086 Australia

NSW SHOWROOM

Level 3, 60 Reservoir St
Surry Hills, NSW 2010 Australia

VIC SHOWROOM

Unit 1, 35-47 Hood St
Airport West, VIC 3042 Australia

CANBERRA SHOWROOM

Unit 1, Building 1, 26 Ipswich St
Fyshwick, ACT 2609 Australia

SYDNEY PO BOX

P.O. BOX 461
Collaroy Beach, NSW 2097 Australia