

COAST ARMCHAIR

Profile Systems | Spec Sheet



v1.1

 PROFILE
SYSTEMS



COAST

Specifications



FEATURES

- PREMIUM GRADE MOULDED FOAM SEAT
- ELECTROSTATIC POWDER COATING OR BRASS ARMS, BASE AND STRUCTURE
- UPHOLSTERED IN HOUSE FABRIC, LEATHER OR COM

LEAD TIME

8-10 WEEKS

DIMENSIONS

W: 700mm
H: 840mm
D: 800mm
SH: 440mm

MATERIALS

- POWDERCOATED OR BRASS BASE
- FULLY UPHOLSTERED
- HOUSE FABRIC/ LEATHER/ COM
- HIGH RESILIENCE FOAM
- VISIT P.3 FOR STANDARD FABRIC OPTIONS

Introducing Coast armchair, a timeless piece, upholstered in luxurious leather, PU or fabric, with an eye-catching yet sturdy powder coated steel or brass frame and arms.

Coast armchair will allow you to sit comfortably anywhere in your office.



COAST

Finishes

UPHOLSTERY

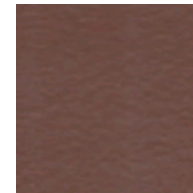
The standard upholstery options for this product are seen below, however, alternative upholstery may be available on request.

BASE

Electrostatic Powder Coated Base in Black or White, or Brass.



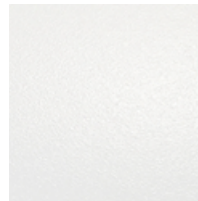
UPHOLSTERY FINISH OPTIONS:



BASE FINISH OPTIONS:



BLACK
POWDER
COAT



WHITE
POWDER
COAT



BRASS



PLEASE NOTE:

The shades of fabric swatches found in this document cannot be reproduced exactly to what is seen on digital or printed paper. Profile Systems is entitled to make modifications at any time or without any prior notice.



GENERAL INFO & TERMS

PROFILE SYSTEMS GUARANTEE

Profile Systems provides warranty policies on products that specify a warranty period. The warranty period commences on the date of delivery.

PROFILE SYSTEMS CERTIFICATION

Profile Systems continually strive to reduce the environmental impact of all products we offer. For many years, Profile Systems has been working with dedicated suppliers and manufacturers who conform to the ISO14001 standard. This standard is used worldwide to assess business environmental management systems in order to ensure wood products originate from responsibly managed forests.

In line with this, we have created an internal product stewardship program, which directly aligns with our manufacturing partners who are ISO 14001 certified and accredited with GreenGuard, BIFMA, GECA, AFRDI, Greentick, FSC, VOC certifications or equivalent.

Additionally, we endeavour to recycle all product packaging systems to help reduce and re-home furniture waste. Profile Systems is committed to meeting the quality requirements and control management of production processes, Profile Systems can guarantee excellent quality, long life and durability.

PROFILE SYSTEMS FABRICS

The shades of fabric swatches found in this document cannot be reproduced exactly to what is seen on digital or printed paper. Profile Systems is entitled to make modifications at any time or without any prior notice.

PROFILE SYSTEMS LEAD TIMES

Is measured from the receipt of approved shop drawings, an official purchase order, and payment of the deposit invoice. Lead times exclude weekends, public holidays, and RDOs. Lead time is subject to specified fabrics/laminate/timber finishes being in stock and readily available at receipt of order confirmation. Profile Systems reserves the right to extend our lead-time if materials are not readily available.

PROFILE SYSTEMS MAINTENANCE

If you have any queries in regards to our general maintenance practices, or you have a product matter you need to discuss, please send us an email with images to sales@profilesystems.com.au

CONTACT

For further enquiries / to order:

sales@profilesystems.com.au

1800 788 755

www.profilesystems.com.au



LOCATIONS

HEAD OFFICE

Unit 8, 25 Frenchs Forest Rd. E
Frenchs Forest, NSW 2086 Australia

NSW SHOWROOM

Level 3, 60 Reservoir St
Surry Hills, NSW 2010 Australia

VIC SHOWROOM

Unit 1, 35-47 Hood St
Airport West, VIC 3042 Australia

CANBERRA SHOWROOM

Unit 1, Building 1, 26 Ipswich St
Fyshwick, ACT 2609 Australia

SYDNEY PO BOX

P.O. BOX 461
Collaroy Beach, NSW 2097 Australia