

MALTA CHAIR

Profile Systems | Spec Sheet



v1.1

 PROFILE
SYSTEMS



MALTA

Specifications



FEATURES

- ARMREST ADJUSTMENT
- HEIGHT ADJUSTABLE
- BACKREST LOCK/UNLOCK
- BACKREST TENSION
- LUMBAR SUPPORT
- SEAT SLIDER
- OPTIONAL HEADREST
- COLOUR OPTIONS:
BLACK/WHITE/GREY

LEAD TIME

8-10 WEEKS

DIMENSIONS

W: 680mm
H: 970mm
D: 610mm

MATERIALS

- NYLON BACK FRAME
- HOUSE MESH AND UPHOLSTERY
- HIGH DENSITY SPONGE SEAT
- FIVE WAY BASE IN BLACK, WHITE OR GREY

Malta Task Chair incorporates clean lines and an adaptive design aesthetic. Available in black, white or grey combinations, Malta is a very versatile and eye-catching ergonomic task chair that is suitable for task, managerial or even meeting and boardroom applications.



MALTA

Finishes

UPHOLSTERY

The standard upholstery options for this product are seen below, however, alternative upholstery may be available on request.

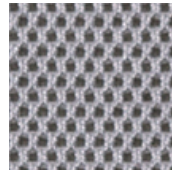
BASE

Black, Grey, or White castors

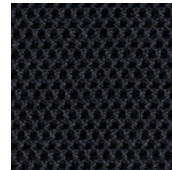


FINISH OPTIONS:

MESH BACK OPTIONS:

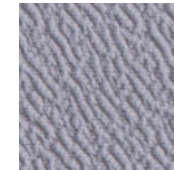


HY 8101

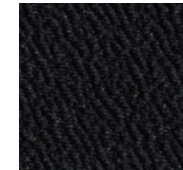


HY 8104

UPHOLSTERED SEAT OPTIONS:



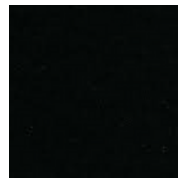
A9510



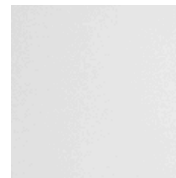
A9505



FRAME FINISH OPTIONS:



BLACK



WHITE GREY



GENERAL INFO & TERMS

PROFILE SYSTEMS GUARANTEE

Profile Systems provides warranty policies on products that specify a warranty period. The warranty period commences on the date of delivery.

PROFILE SYSTEMS CERTIFICATION

Profile Systems continually strive to reduce the environmental impact of all products we offer. For many years, Profile Systems has been working with dedicated suppliers and manufacturers who conform to the ISO14001 standard. This standard is used worldwide to assess business environmental management systems in order to ensure wood products originate from responsibly managed forests.

In line with this, we have created an internal product stewardship program, which directly aligns with our manufacturing partners who are ISO 14001 certified and accredited with GreenGuard, BIFMA, GECA, AFRDI, Greentick, FSC, VOC certifications or equivalent. Additionally, we endeavour to recycle all product packaging and strive to recycle and re-home furniture utilising our End of Life Policy.

PROFILE SYSTEMS QUALITY

Thanks to our established quality requirements and control management of production processes, Profile Systems can guarantee excellent quality, long life and durability.

PROFILE SYSTEMS FABRICS

The shades of fabric swatches found in this document cannot be reproduced exactly to what is seen on digital or printed paper. Profile Systems is entitled to make modifications at any time or without any prior notice.

PROFILE SYSTEMS LEAD TIMES

Is measured from the receipt of approved shop drawings, an official purchase order, and payment of the deposit invoice. Lead times exclude weekends, public holidays, and RDOs. Lead time is subject to specified fabrics/laminate/timber finishes being in stock and readily available at receipt of order confirmation. Profile Systems reserves the right to extend our lead-time if materials are not readily available.

PROFILE SYSTEMS MAINTENANCE

If you have any queries in regards to our general maintenance practices, or you have a product matter you need to discuss, please send us an email with images to sales@profilesystems.com.au

CONTACT

For further enquiries / to order:

sales@profilesystems.com.au

1800 788 755

www.profilesystems.com.au



LOCATIONS

HEAD OFFICE

Unit 8, 25 Frenchs Forest Rd. E
Frenchs Forest, NSW 2086 Australia

NSW SHOWROOM

Level 3, 60 Reservoir St
Surry Hills, NSW 2010 Australia

VIC SHOWROOM

Unit 1, 35-47 Hood St
Airport West, VIC 3042 Australia

CANBERRA SHOWROOM

Unit 1, Building 1, 26 Ipswich St
Fyshwick, ACT 2609 Australia

SYDNEY PO BOX

P.O. BOX 461
Collaroy Beach, NSW 2097 Australia