



GRADO

COLOUR SWATCH



 PROFILE
SYSTEMS



FABRIC



OTE Sunday

OTE Vico

OTE Decent

Gabriel Medley

Novatex

Sunbrella

Camira Oceanic

Kvadrat Remix 3

www.profilesystems.com.au/products



GRADO FABRIC

OTE Sunday

A

Composition 100% Polyester
 Origin China
 Abrasion \geq 40000
 Lightfastness 4
 Rubbing 4.5
 Pilling 4



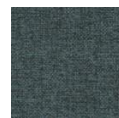
Sunday 10



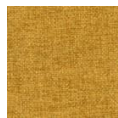
Sunday 34



Sunday 39



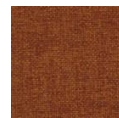
Sunday 53



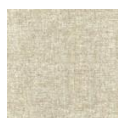
Sunday 83



Sunday 103



Sunday 149



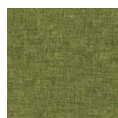
Sunday 02



Sunday 27



Sunday 22



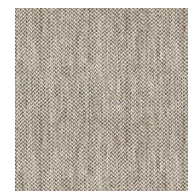
Sunday 80

www.profilesystems.com.au/products

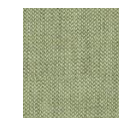
OTE Vico

A

Composition 93% Polyester,
 5% Cotton, 2% Nylon
 Origin China
 Abrasion \geq 40000
 Lightfastness 4
 Rubbing 4
 Pilling 4



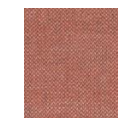
vico-04



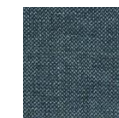
vico 08



vico 09



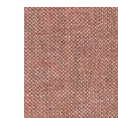
vico 11



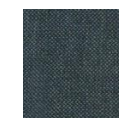
vico 20



vico 33



vico 41



vico 47



vico 64

The colours in this publication may differ to the original product. We recommend requesting a product sample. Further information: WWW.PROFILESYSTEMS.COM.AU



GRADO FABRIC

OTE Decent

A

Composition 100% Polyester
 Origin China
 Abrasion > 40000
 Lightfastness 4
 Rubbing 4
 Pilling



Decent 02



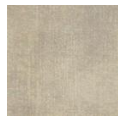
Decent 09



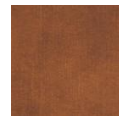
Decent 10



Decent 15



Decent 21



Decent 26



Decent 29

Hafeele LE9140B

B

Composition 100% Polyester
 Origin China
 Abrasion 4
 Lightfastness 4-5
 Rubbing 4-5
 Pilling



LE9140B-01



LE9140B-02



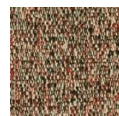
LE9140B-16



LE9140B-27



LE9140B-33



LE9140B-35

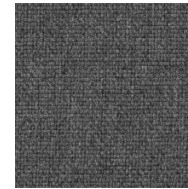


LE9140B-38

Gabriel Medley

B

Composition 100% Polyester
 Origin Denmark
 Abrasion > 75000
 Lightfastness 5-7
 Rubbing 4-5
 Pilling 4



GM-60004



GM-60167



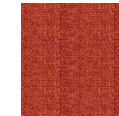
GM-61002



GM-61003



GM-62002



GM-63017



GM-63064



GM-66007



GM-66010



GM-66145



GM-67053



GM-68002



GM-68005

The colours in this publication may differ to the original product. We recommend requesting a product sample. Further information: WWW.PROFILESYSTEMS.COM.AU



GRADO FABRIC

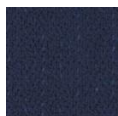
Novatex

B

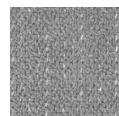
Composition 79% Polyester, 13% Acrylic, 8% Viscosa
Origin China
Abrasion ≥ 20000
Lightfastness
Rubbing 4-4.5
Pilling



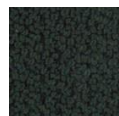
NA 05



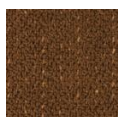
NA 14



NA 18



NA 62



NA 71

MAYA

B

Composition 54% Polyester, 46% Acrylic
Origin China
Abrasion ≥ 25000
Lightfastness
Rubbing 3-4
Pilling



A2267-2A

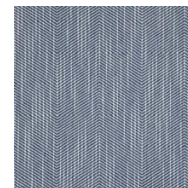


A2267-3A

Sunbrella

C

Composition	100% Acrylic Fiber	面料成分	100% 腈纶
Origin	USA	产地	美国
Abrasion	Annex Cobalt ≥ 75000 Annex Guava ≥ 45000 Draft Classic ≥ 47000 Tropics Jungle ≥ 22500	耐磨度	Annex Cobalt ≥ 75000 转 Annex Guava ≥ 45000 转 Draft Classic ≥ 47000 转 Tropics Jungle ≥ 22500 转
Lightfastness	4-5	光照色牢度	4-5
Rubbing		摩擦色牢度	
Pilling	1	抗起球度	1



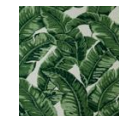
Annex Cobalt 44267-0004



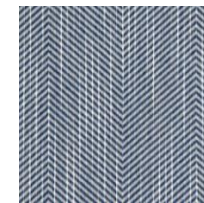
Annex Guava
44267-0006



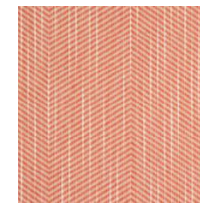
Draft Classic
145408-0001



Tropics Jungle
145214-0000



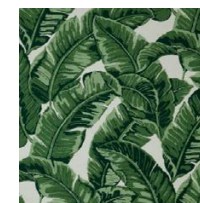
Annex Cobalt 44267-0004



Annex Guava 44267-0006



Draft Classic 145408-0001



Tropics Jungle 145214-0000

Camira Blazer

D

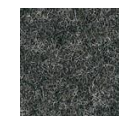
Composition 100% Pure New Wool
Origin UK
Abrasion ≥ 50000
Lightfastness 5
Rubbing 4
Pilling 4



CUZ1E



CUZ1W



CUZ30

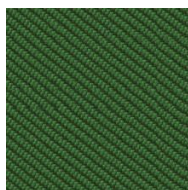


GRADO FABRIC

Camira Oceanic

D

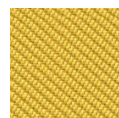
Composition 100% post-consumer recycled plastic, including 50% SEAQUAL yarn
 Origin UK
 Abrasion ≥ 100000
 Lightfastness 5
 Rubbing 4
 Pilling 4



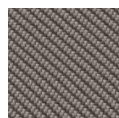
OOC03



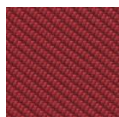
OOC04



OOC07



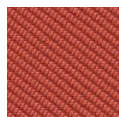
OOC08



OOC10



OOC11



OOC12



OOC13



OOC15



OOC16

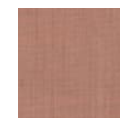
Kvadrat Remix 3

E

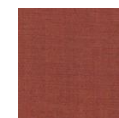
Composition 90% new wool worsted, 10% nylon
 Origin UK
 Abrasion ≥ 100000
 Lightfastness 6
 Rubbing 7
 Pilling 4



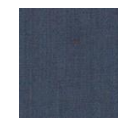
Remix 30422



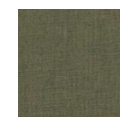
Remix 30612



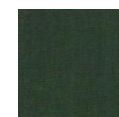
Remix 30632



Remix 30743



Remix 30933



Remix 30982





LEATHER



www.profilesystems.com.au/products



MICROHIDE Birkin

ZHIHE YG 系列



GRADO LEATHER

MICROHIDE Birkin

B

Composition 90% PU, 10% Silicone,
Backing: 100% Polyester
Origin China
Abrasion >= 100000
Lightfastness 4
Rubbing 4-5



6001



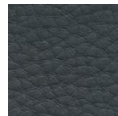
6002



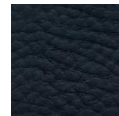
6004



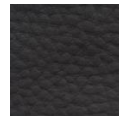
6030



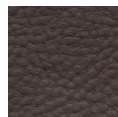
6035



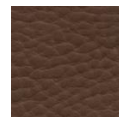
6038



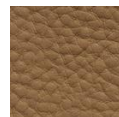
6014



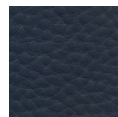
6012



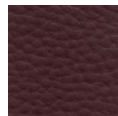
6011



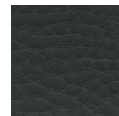
6010



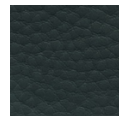
6026



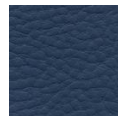
6017



6025



6024



6027

ZHIHE YG 系列

LO

Composition Leather
Origin China



YG-1586



YG-1608



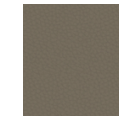
YG-1823



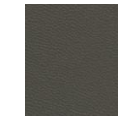
YG-1901



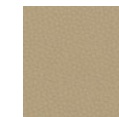
YG-73607



YG-1892



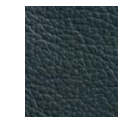
YG-1896



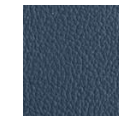
YG-1899



YG-2010



YG-2053



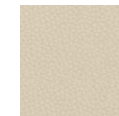
YG-72881



YG-1862



YG-1618



YG-73598



GENERAL INFO & TERMS

PROFILE SYSTEMS GUARANTEE

Profile Systems provides warranty policies on products that specify a warranty period. The warranty period commences on the date of delivery.

PROFILE SYSTEMS CERTIFICATION

Profile Systems continually strive to reduce the environmental impact of all products we offer. For many years, Profile Systems has been working with dedicated suppliers and manufacturers who conform to the ISO14001 standard. This standard is used worldwide to assess business environmental management systems in order to ensure wood products originate from responsibly managed forests.

In line with this, we have created an internal product stewardship program, which directly aligns with our manufacturing partners who are ISO 14001 certified and accredited with GreenGuard, BIFMA, GECA, AFRDI, Greentick, FSC, VOC certifications or equivalent.

Additionally, we endeavour to recycle all product packaging and strive to recycle and re-home furniture utilising our End of Life Policy.

PROFILE SYSTEMS QUALITY

Thanks to our established quality requirements and control management of production processes, Profile Systems can guarantee excellent quality, long life and durability.

PROFILE SYSTEMS FABRICS

The shades of fabric swatches found in this document cannot be reproduced exactly to what is seen on digital or printed paper. Profile Systems is entitled to make modifications at any time or without any prior notice.

PROFILE SYSTEMS LEAD TIMES

Is measured from the receipt of approved shop drawings, an official purchase order, and payment of the deposit invoice. Lead times exclude weekends, public holidays, and RDOs. Lead time is subject to specified fabrics/laminate/timber finishes being in stock and readily available at receipt of order confirmation. Profile Systems reserves the right to extend our lead-time if materials are not readily available.

PROFILE SYSTEMS MAINTENANCE

If you have any queries in regards to our general maintenance practices, or you have a product matter you need to discuss, please send us an email with images to sales@profilesystems.com.au

CONTACT

For further enquiries / to order:

sales@profilesystems.com.au

1800 788 755

www.profilesystems.com.au



LOCATIONS

HEAD OFFICE

Unit 8, 25 Frenchs Forest Rd. E
Frenchs Forest, NSW 2086 Australia

NSW SHOWROOM

Level 3, 60 Reservoir St
Surry Hills, NSW 2010 Australia

VIC SHOWROOM

Unit 1, 35-47 Hood St
Airport West, VIC 3042 Australia

CANBERRA SHOWROOM

Unit 1, Building 1, 26 Ipswich St
Fyshwick, ACT 2609 Australia

SYDNEY PO BOX

P.O. BOX 461
Collaroy Beach, NSW 2097
Australia

