

# BEOS ARMCHAIR

**Profile Systems** | Spec Sheet



v1.1

 PROFILE  
SYSTEMS



## BEOS

### Specifications

---



#### FEATURES

- PREMIUM GRADE MOULDED FOAM SEAT
- FULLY UPHOLSTERED SEAT, BACK AND ARMRESTS
- EQUIPPED WITH AN ANTI-SKID MAT
- INCLUDES A PILLOW (SEEN IN PHOTOS)
- AVAILABLE IN WOOD OR STEEL BASE

#### MATERIALS

- HOUSE FABRIC
- HIGH RESILIENCE FOAM
- VISIT P.3 FOR STANDARD FABRIC OPTIONS
- STEEL FRAME CONNECTION PROCESS: BASE IS PU PAINTING INCLUDES A PILLOW "

#### LEAD TIME

8-10 WEEKS

The Beos Armchair is a minimalistic, Scandinavian style masterpiece that effortlessly elevates any space. Inspired by the segments of a seashell, Beos features clean lines with an eye-catching, curvaceous shape. Adding to the ultimate charm of this design, the base structure includes a statement light wood with PU connection. The fully upholstered backrest and armrests are designed with an attachable headrest, ensuring ultimate comfort and support. And a soft two-colour design in the upholstery provides a soothing, multi-layered aesthetic for the space.





# BEOS

## Finishes

---

### UPHOLSTERY

The standard upholstery options for this product are seen below, however, alternative upholstery may be available on request.

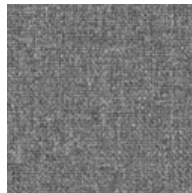
### BASE

Base is powder epoxy polyester powder coated. Available in steel or wooden base.



### UPHOLSTERY FINISH OPTIONS:

---



GM-60167



GM-60004



GM-62002



GM-61003



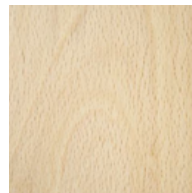
REMIX-30422

### BASE FINISH OPTIONS:

---



POWDER  
COAT STEEL



BEECHWOOD

\*Alternative upholstery may be available upon request.

**PLEASE NOTE:**

The shades of fabric swatches found in this document cannot be reproduced exactly to what is seen on digital or printed paper. Profile Systems is entitled to make modifications at any time or without any prior notice.

# BEOS

## Configurations

---



W810 x D915 x H715 x SH420



W810 x D915 x H715 x SH420



W810 x D915 x H715 x SH420







## GENERAL INFO & TERMS

---

### PROFILE SYSTEMS GUARANTEE

Profile Systems provides warranty policies on products that specify a warranty period. The warranty period commences on the date of delivery.

### PROFILE SYSTEMS CERTIFICATION

Profile Systems continually strive to reduce the environmental impact of all products we offer. For many years, Profile Systems has been working with dedicated suppliers and manufacturers who conform to the ISO14001 standard. This standard is used worldwide to assess business environmental management systems in order to ensure wood products originate from responsibly managed forests.

In line with this, we have created an internal product stewardship program, which directly aligns with our manufacturing partners who are ISO 14001 certified and accredited with GreenGuard, BIFMA, GECA, AFRDI, Greentick, FSC, VOC certifications or equivalent.

Additionally, we endeavour to recycle all product packaging systems to help reduce and re-home furniture waste. Using our Responsible Quality requirements and control management of production processes, Profile Systems can guarantee excellent quality, long life and durability.

### PROFILE SYSTEMS FABRICS

The shades of fabric swatches found in this document cannot be reproduced exactly to what is seen on digital or printed paper. Profile Systems is entitled to make modifications at any time or without any prior notice.

### PROFILE SYSTEMS LEAD TIMES

Is measured from the receipt of approved shop drawings, an official purchase order, and payment of the deposit invoice. Lead times exclude weekends, public holidays, and RDOs. Lead time is subject to specified fabrics/laminate/timber finishes being in stock and readily available at receipt of order confirmation. Profile Systems reserves the right to extend our lead-time if materials are not readily available.

### PROFILE SYSTEMS MAINTENANCE

If you have any queries in regards to our general maintenance practices, or you have a product matter you need to discuss, please send us an email with images to [sales@profilesystems.com.au](mailto:sales@profilesystems.com.au)

## CONTACT

---

For further enquiries / to order:

[sales@profilesystems.com.au](mailto:sales@profilesystems.com.au)

1800 788 755

[www.profilesystems.com.au](http://www.profilesystems.com.au)



## LOCATIONS

### HEAD OFFICE

Unit 8, 25 Frenchs Forest Rd. E  
Frenchs Forest, NSW 2086 Australia

### NSW SHOWROOM

Level 3, 60 Reservoir St  
Surry Hills, NSW 2010 Australia

### VIC SHOWROOM

Unit 1, 35-47 Hood St  
Airport West, VIC 3042 Australia

### CANBERRA SHOWROOM

Unit 1, Building 1, 26 Ipswich St  
Fyshwick, ACT 2609 Australia

### SYDNEY PO BOX

P.O. BOX 461  
Collaroy Beach, NSW 2097 Australia