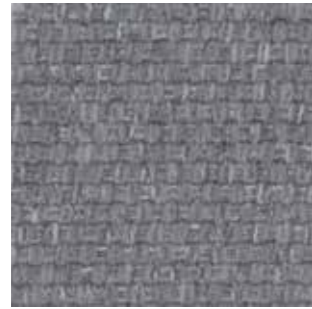




Finishes

HY

Material	100%polyester	材质	100%涤纶
Weight	510	克重	510
Width	140CM	幅宽	140CM
Abrasion Resistance	>50000rpm	耐磨度	>50000转
Cleanng	Attention to high temperature, dry cleaning, washing, non-bleaching, drying	面料养护	注意高温, 干洗, 水洗, 不可漂白, 烘干



HY-5035



HY-5000



HY-5014



HY-5015



HY-5006



HY-5028



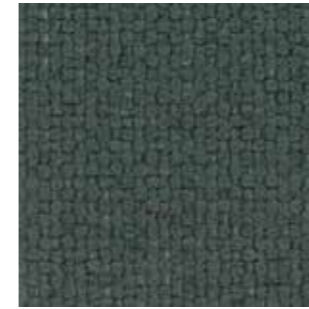
HY-5032



HY-5034

MINA

Material	100%polyester	材质	100%涤纶
Weight	430	克重	430
Width	145CM	幅宽	145CM
Abrasion Resistance	>40000rpm	耐磨度	>40000转
Cleanng	Attention to high temperature, dry cleaning, washing, non-bleaching, drying	面料养护	注意高温, 干洗, 水洗, 不可漂白, 烘干



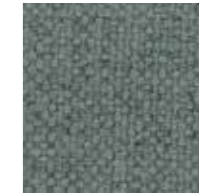
MIN-20



MIN-16



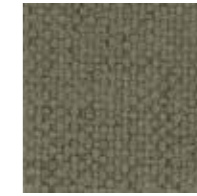
MIN-21



MIN-18



MIN-23



MIN-36



MIN-41



MIN-02



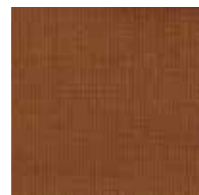
MIN-40

LIDO

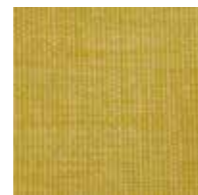
Material	100%polyester	材质	100%涤纶
Weight	510	克重	450
Width	140CM	幅宽	144CM
Abrasion Resistance	>50000rpm	耐磨度	>40000转
Cleanng	Attention to high temperature, dry cleaning, washing, non-bleaching, drying	面料养护	注意高温, 干洗, 水洗, 不可漂白, 烘干



LID-40



LID-09



LID-48



LID-140



LID-54

VICO

Material	93% polyester 5% cotton 2% nylon	材质	93%涤纶5%棉2%尼龙
Weight	390g/m ²	克重	390g/m ²
Width	160cm	幅宽	160cm
Abrasion Resistance	>40000rpm	耐磨度	>40000转
Cleanng	Pay attention to high temperature, exposure, dry cleaning, washing, not bleaching, drying	面料养护	注意高温, 暴晒, 干洗, 水洗, 不可漂白, 烘干



VIC-09



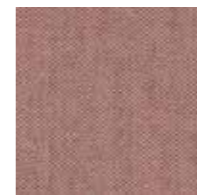
VIC-23



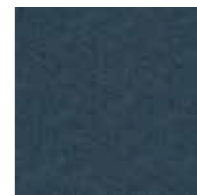
VIC-39



VIC-33



VIC-41



VIC-21



VIC-13

SUNDAY

Material	100%polyester	材质	100%涤纶
Weight	510	克重	380
Width	140CM	幅宽	140CM
Abrasion Resistance	>50000rpm	耐磨度	>40000转
Cleannng	Attention to high temperature, dry cleaning, washing, non-bleaching, drying	面料养护	注意高温, 干洗, 水洗, 不可漂白, 烘干



SUN-83



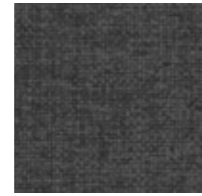
SUN-10



SUN-62



SUN-21



SUN-35



SUN-45



SUN-158



SUN-53



SUN-69

RUBY

Composition	95%POLYESTER,5%ACRYLIC	成分	100%POLYESTER,5%ACRYLIC
Width	142±2cm	幅宽	142±2厘米
Weight	440g/m	克重	440克/m ²
Color fastness to rubbing	Dry ≥4.0 , Wet≥3-4	摩擦色牢度	干磨≥4.0, 湿磨≥3-4
Abrasion	>25000 rubs	耐磨性能	>25000转



RUB-456



RUB-452



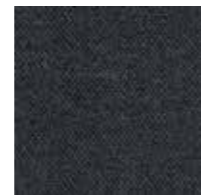
RUB-151



RUB-102



RUB-355



RUB-303

FLOWER

Material	100%polyester	材质	100%涤纶
Weight	365±12g/m ²	克重	365±12g/m ²
Width	145cm±5cm	幅宽	145cm±5cm
Abrasion Resistance	>40000rpm	耐磨度	>40000转
Cleannng	Attention to high temperature, dry cleaning, washing, non-bleaching, drying	面料养护	注意高温, 干洗, 水洗, 不可漂白, 烘干



FLO-07



FLO-10



FLO-20



FLO-17



FLO-13



FLO-32



FLO-41



FLO-52



FLO-47



FLO-48



FLO-34



FLO-28

WALES

Composition	100%POLYESTER	成分	100%POLYESTER
Width	142±2cm	幅宽	142±2厘米
Weight	550g/m	克重	550克/m ²
Color fastness to rubbing	Dry 4.0 , Wet3-4	摩擦色牢度	干磨4.0, 湿磨3-4
Piling	4.0@(5000rubs)	抗起毛起球	4.0@(5000转)
Abrasion	>40000 rubs	耐磨性能	>40000转



WAL-170



WAL-101

MLE

Weight	140cm	幅宽	140cm
Weight	428g/m ²	克重	428g/m ²
Width	1.15	厚度	1.15
Color fastness to alcohol	Lv.4	耐酒精色牢度	4级
Fastness to breaking	≥150000times	常温耐折牢度	≥150000次
Tensile load	warp-wise ≥350times ,	拉伸负荷	经向≥350次
	Warp direction ≥250times		纬向≥250次
Wear-resistant	CS-10,500g,500R	耐磨	CS-10,500g,500R



MLE-01



MLE-02



MLE-03



MLE-04



MLE-05



MLE-06



MLE-07



MLE-08

LEA1

Width	1.2-1.4	厚度	1.2-1.4
attrition	≥500times	磨损	≥500次
colour	90%	颜色(与样品比)	90%
Color fastness to rubbing	Dry ≥500times/9N ,	摩擦色牢度	干擦≥500次/9N,
	Wet ≥250times/9N		湿擦≥250次/9N



LEA1-01



LEA1-02



LEA1-03



LEA1-04



LEA1-05

LEA2

Width	1.2-1.4	厚度	1.2-1.4
attrition	≥500times	磨损	≥500次
colour	90%	颜色(与样品比)	90%
Color fastness to rubbing	Dry ≥500times/9N ,	摩擦色牢度	干擦≥500次/9N,
	Wet ≥250times/9N		湿擦≥250次/9N



LEA2-01



LEA2-02



LEA2-03



LEA2-04