

CONTRACT FABRICS

COLLECTION VE01





Dover-80

Dover Grade A

Composition: 100% POLYESTER

Width :142±2CM

Weight :380g/m2

Finish:100G Fleece Lamination

Washing: 30 degrees low temperature washing, do not bleach, low temperature light ironing, do not turn over, conventional drycleaning.

Physical Performance:

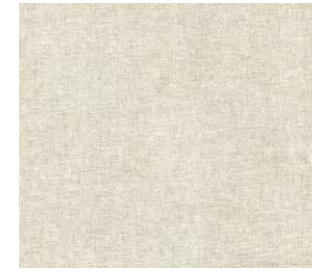
Color fastness to light:24.0

Color fastness to washing:24.0

Color fastness to rubbing: Dry24.0, Wet23-4

Pilling:4.0@(5000 rubs)

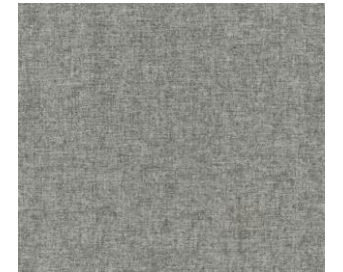
Abraison : > 40000 rubs



Dover-01



Dover-10



Dover-32



Dover-35



Dover-41



Dover-45



Dover-53



Dover-83



Dover-151



Dover-149



Dover-156



Dover-284

Frequent wash may affect the performance of the product.





Lyon-35

Lyon Grade A

Composition: 100% POLYESTER

Width :142±2CM

Weight :380g/m2

Finish:100G Fleece Lamination

Washing: 30 degrees low temperature

washing, do not bleach,low temperature

light ironing, do not turn over,

conventional drycleaning.

Physical performance:

Color fastness to light:24.0

Color fastness to washing:24.0

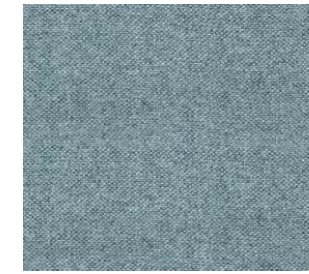
Color fastness to rubbing:Dry24.0, Wet23-4

Pilling:4.0@(5000 rubs)

Abraison : > 40000 rubs



Lyon-01



Lyon-007



Lyon-17



Lyon-20



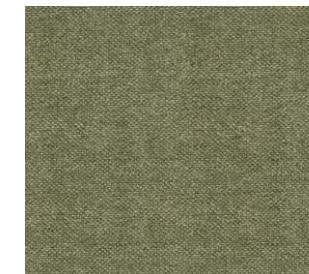
Lyon-021



Lyon-23



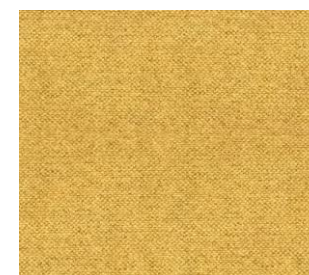
Lyon-31



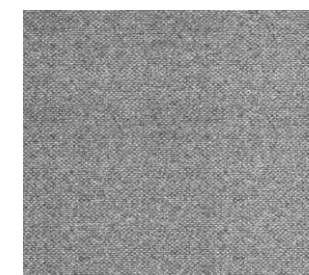
Lyon-36



Lyon-41



Lyon-43



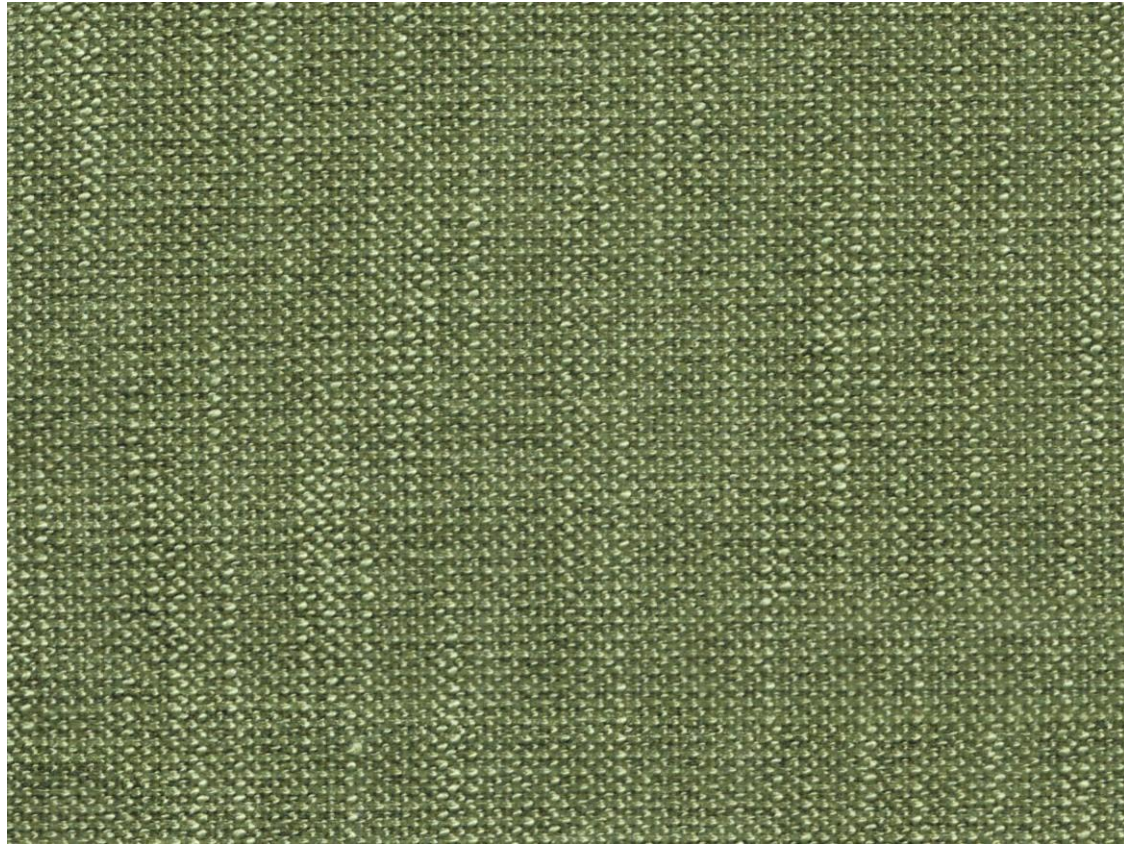
Lyon-45



Lyon-49

Frequent wash may affect the performance of the product.





Aalst-020

Aalst Grade A

Composition: 100% POLYESTER

Width: 142+2CM

Weight: 320g/m²

Finish: Stabilized

Washing: 30 degrees low temperature

washing, do not bleach, low

temperature light ironing, do not turn over,

conventional dry cleaning. Physical

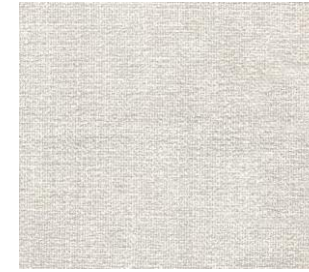
Color fastness to light: 24.0

Color fastness to washing: 24.0

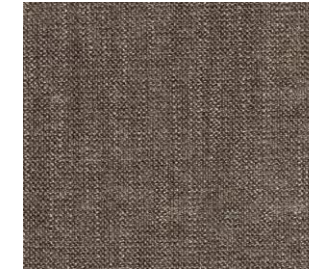
Color fastness to rubbing: Dry 24.0, Wet ≥ 3-4

Pilling : 4.0@ (5000 rubs)

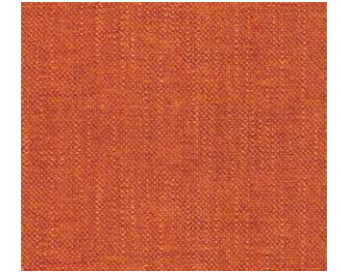
Abraison : > 25000 rubs



Aalst-01



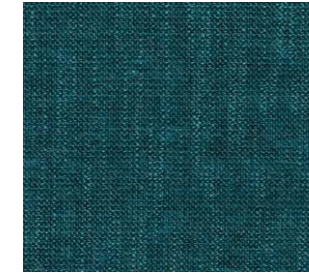
Aalst-05



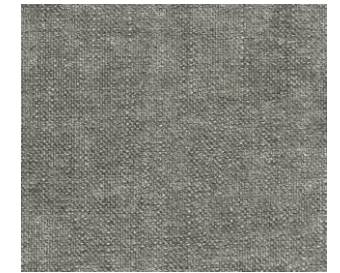
Aalst-07



Aalst-08



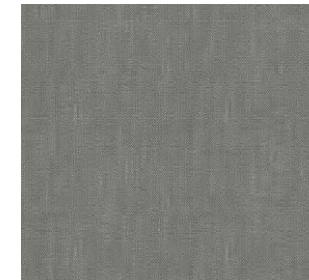
Aalst-11



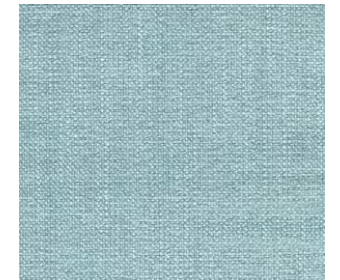
Aalst-14



Aalst-47



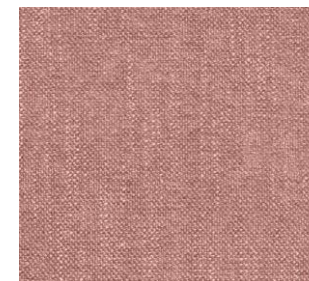
Aalst-63



Aalst-69



Aalst-79

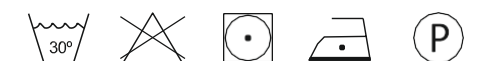


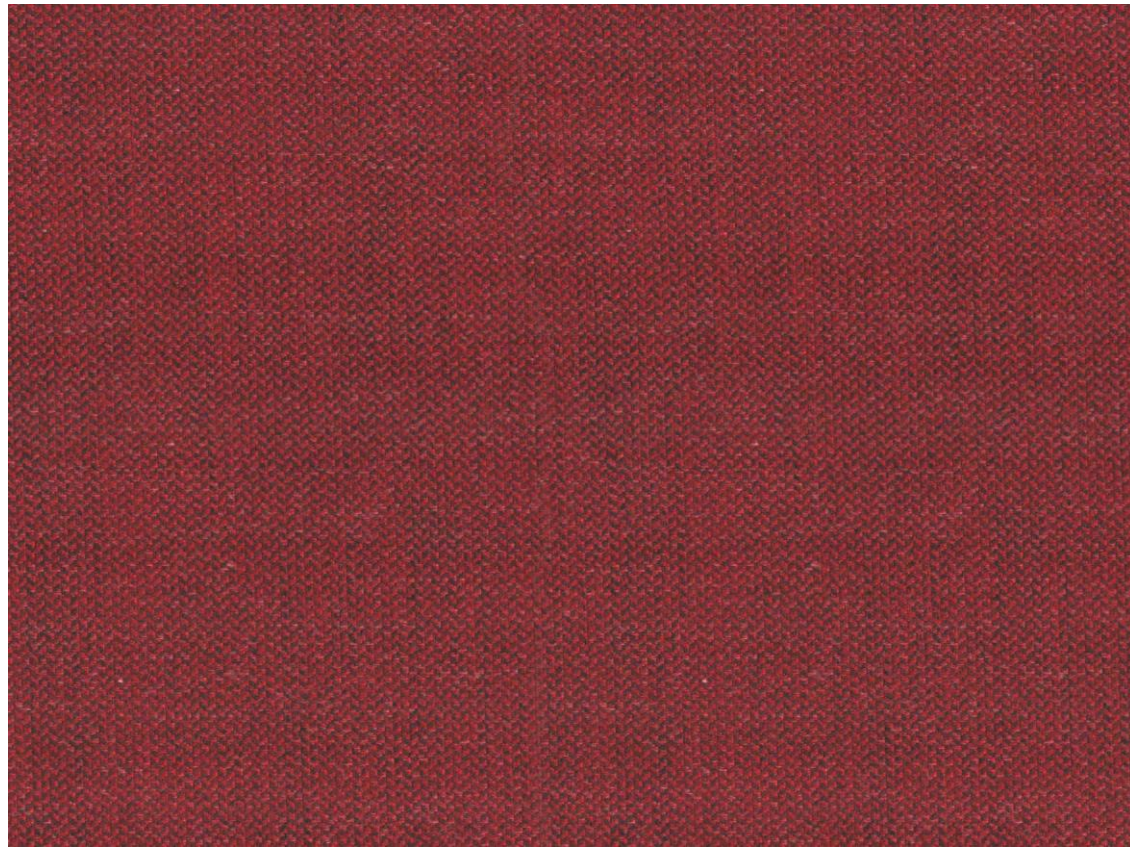
Aalst-088



Aalst-171

Frequent wash may affect the performance of the product.





Lund-57

Lund Grade A

Composition: 93% POLYESTER, 5%

COTTON, 2%

NYLON Width :142+2CM

Weight :390g/m²

Finish: 100G Fleece Lamination

Washing: 30 degrees low temperature

Washing: Do not bleach, low temperature

Light ironing, do not turn over

conventional drycleaning.Physical

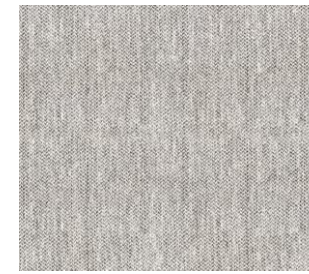
performance: Color fastness to light:24.0

Color fastness to washing:24.0

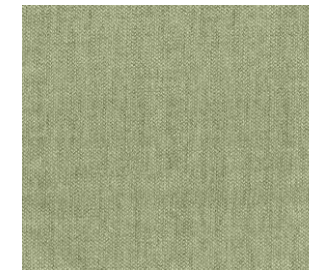
Color fastness to rubbing:Dry24.0, Wetz3-4

Pilling :4.0@(5000 rubs)

Abraison : > 25000 rubs



Lund-003



Lund-08



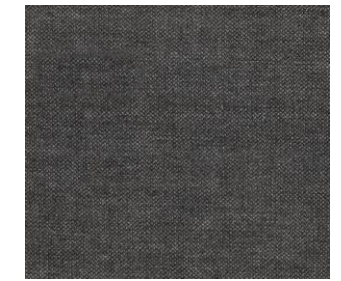
Lund-09



Lund-17



Lund-21



Lund-24



Lund-27



Lund-036



Lund-041



Lund-44



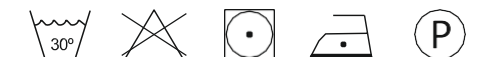
Lund-49

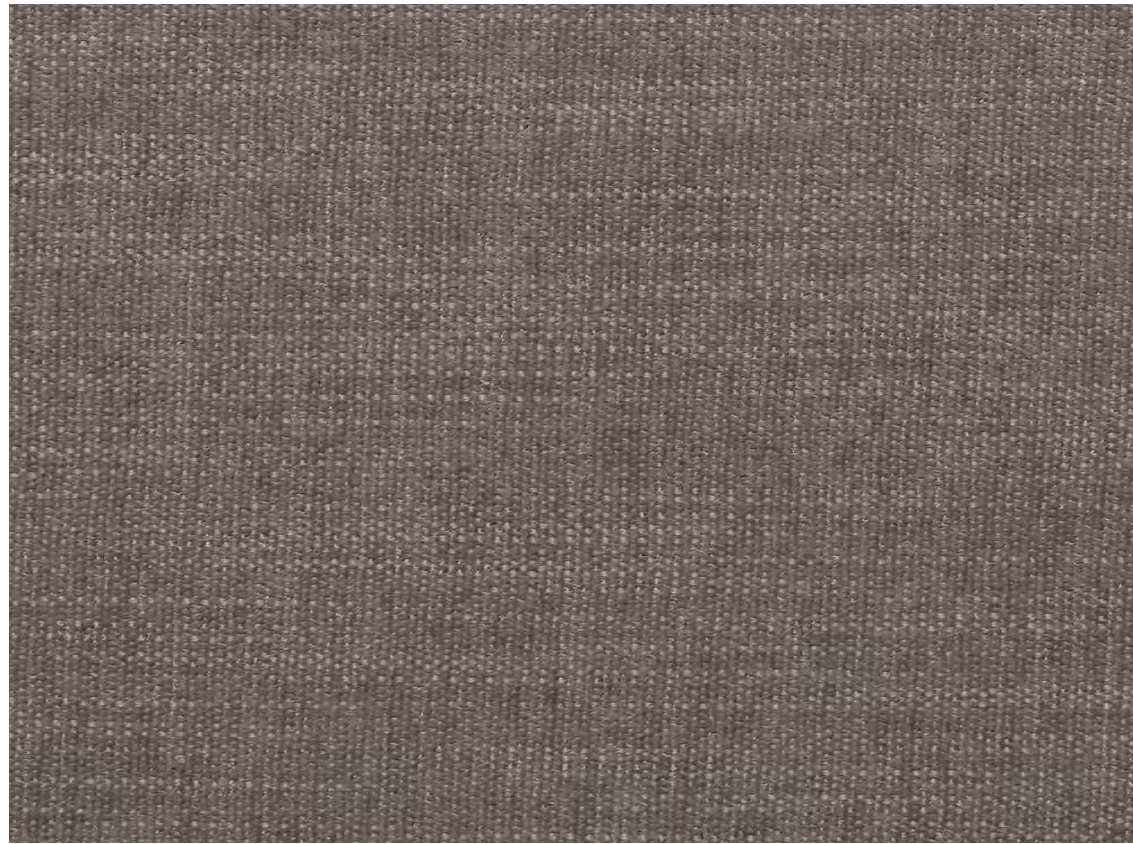


Lund-60



Frequent wash may affect the performance of the product.





Manhattan-0709

Manhattan Grade A

Composition	100%Polyester	
Weight	610g/m(+/-5%)	
Tensile Strength	Warp	Weft
ENISO13934-1	/2170N 50.7%/630N	28,5%
Tear Growth Resistance	Warp	Weft
ENISO 13937-3	1117N	29.4N
Seam Slippage Resistance	Warp	Weft
ENISO13936-2	2.5 mm	3.0mm
Abrasion Test		
EN ISO 12947-1,2	80.000	
PWing	4-5	
ENISO12945-2		
Colour Fastness to Rubbing	Dry	Wet
ENISO105-X12	5	5
Colour Fastness to Artificial Light		
ENISO105-B02	4-5	



Manhattan-0708



Manhattan-0710



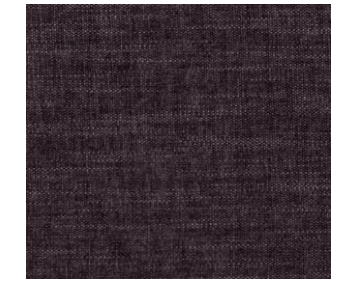
Manhattan-0711



Manhattan-0715



Manhattan-0716



Manhattan-0717



Manhattan-0718



Manhattan-0719



Manhattan-0720



Manhattan-0721

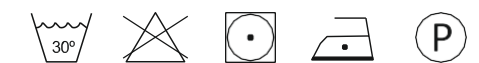


Manhattan-0724



Manhattan-0725

Frequent wash may affect the performance of the product.





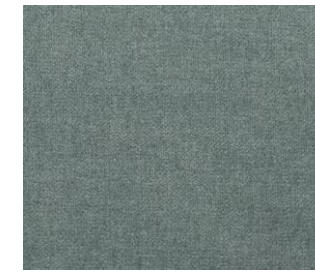
Berlin-0217

Berlin Grade A

Surface Composition	100Polyester	
Backing Composition	100%Polyester	
Tensile Strength	Warp	Weft
ENISO13934-1/1511N	49.6%/425N	17.0%
Tear Growth Resistance	Warp	Weft
ENISO 13937-3	55.7N	37.0N
Seam Slippage Resistance	Warp	Weft
ENISO13936-2	3.0m	2.5mm
AbrasionTest		
EN ISO 12947-1,2	20.000	
PWing	4	
ENISO12945-2		
Colour Fastness to Rubbing	Dry	Wet
ENISO105-X12	4-5	4
Colour Fastness to Artifidiol Light		
ENISO105-B02	5	



Berlin-0001



Berlin-0007



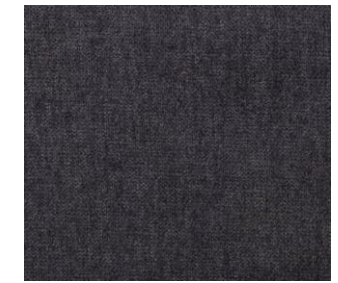
Berlin-0055



Berlin-0075



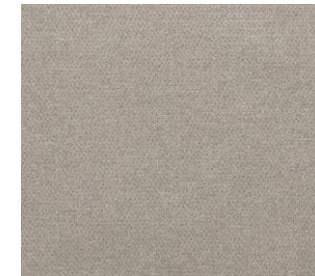
Berlin-0151



Berlin-0169



Berlin-0204



Berlin-0240



Berlin-0245



Berlin-0478

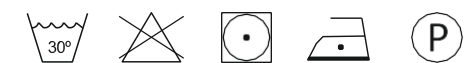


Berlin-0480



Berlin-0508

Frequent wash may affect the performance of the product.





Venice-02

Venice Grade A

Surface Composition	100Polyurethane	
Backing Composition	100%Polyester	
Weight	770g/m(+/-5%)	
Thickness	1.3mm(+/-5%)	
Tensile Strength	Warp	Weft
ENISO 1421	568N 72.8%	620N 103.2%
Tear Growth Resistance	Warp	Weft
ENISO 4674-1	63.8N	61.9N
ENISO13936-2	3.0mm	2.5mm
AbrasionTest		
EN ISO 12947-1,2	>500.000	
ENISO12945-2		
Colour Fastness to Rubbing	Dry	Wet
ENISO105-X12	5	4
Colour Fastness to Artificial Light		
ENISO105-B02	>=6	



Venice-09



Venice-14



Venice-23



Venice-32



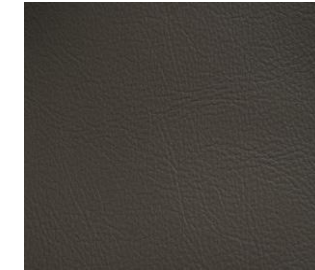
Venice-35



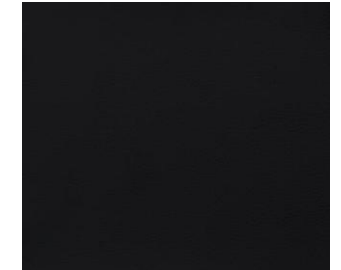
Venice-42



Venice-43

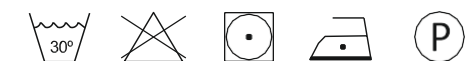


Venice-47



Venice-50

Frequent wash may affect the performance of the product.





PROFILE SYSTEMS

Phone number: 1800 788 755

Email: sales@profilesystems.com.au

Website: profilesystems.com.au

Please note: Additional upholstery options are available upon request. Please contact our team to discuss.

FOLLOW US



profile-systems



Profilesystems_au

